

WE NEED YOUR CONTRIBUTIONS TO COMPLETE THE MUSEUM.

Without your past support, the Topaz Museum Board could not have accomplished all that we have done. Your contributions have made it possible to purchase 634 acres of the Topaz site. That property now is protected from any further development and is a National Historic Landmark. Your gifts have also made it possible to buy property on Delta's Main Street for the new Museum, restore the recreation hall, and provide much of the money we need to construct the building. We thank you all for being so generous, but we cannot finish the Topaz Museum without your continued support.

Join us now to construct the heart of the Topaz Museum: the exhibits!

Every internee deserves to have the story of Topaz told. That is the central mission of the Topaz Museum Board. We need the funding to manufacture and install the exhibits, including a re-created barrack apartment, an art gallery, and displays of featured artifacts. Part of the exhibit will focus on the Constitutional issues violated by internment. **Please help us finish our goal.**

The exhibits will speak for those who are no longer able to tell their stories.



Construction of the Topaz Museum will begin June 2013.

I want to help tell the story of the Topaz Internment Camp. Please accept this donation from

Name _____
 Address _____
 City _____
 State _____ Zip _____
 Amount _____
 E-mail _____
 Phone _____

For a contribution of \$5000, a donor plaque will be engraved with names of those you wish to honor. Donations above \$10,000 will purchase specific exhibits in your name. For a complete list of naming opportunities see our website at www.topazmuseum.org.

E-mail topazmuseum@frontiernet.net or call 435-864-2098.

CONSTRUCTION BEGINS THIS MONTH! JOIN WITH US TO COMPLETE THE TOPAZ MUSEUM!

Fred Y. Hoshiyama, who is approaching 100, moved from Livingston to San Francisco with his family in 1929, after his father had passed away. As the oldest child of six, Fred worked as a paperboy to support his family and was also drawn to the Comrades club at the Japanese YMCA on Sutter Street. When the war broke out, his family was taken to Tanforan and then Topaz. Although Fred wasn't in Topaz very long, leaving for Springfield College in Massachusetts in January 1943, he has been an enthusiastic supporter for all the projects that the Topaz Museum Board has been doing, buying the Topaz site, restoring the recreation hall, and now building the Museum. He didn't hesitate when we asked him to be the co-chairman of the fund raising campaign to design and manufacture the exhibits for the Museum. Even though his physical body is wearing a bit, he said, "Let's go!" Please join with us and Fred to make sure the exhibits are well funded.

May 24, 2013

To all my DEAR FRIENDS and hopefully, future FRIENDS:

Time keeps moving and waits for no one, including Fred Yaichio Hoshiyama, an old survivor of the TOPAZ Concentration Camp, near Delta, Utah. TOPAZ was one of ten, euphemistically called relocation centers. Currently, this ole codger is waiting for his 1st Century in less than two years. Things get lonelier as friends say "bye" before I do.

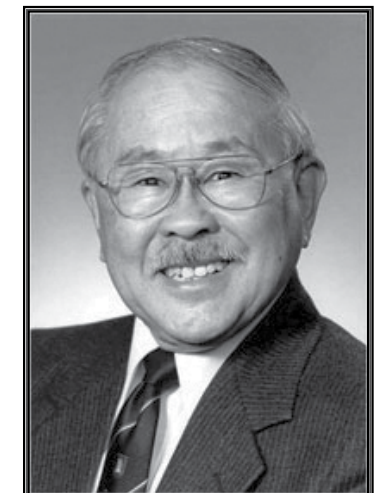
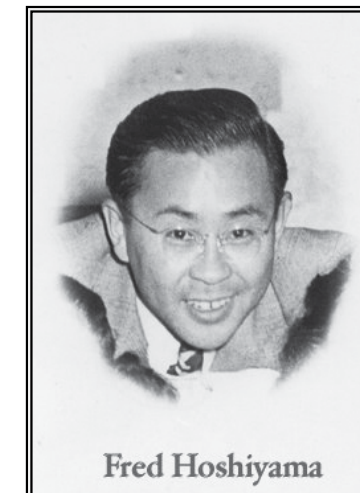
While I can, I want to do my bit, as Co-Chairman of the new museum campaign to finish and establish the TOPAZ Museum and Education Center. I trust that you will agree that the Nation and the world should never forget that true Democracy requires constant vigilance to educate each new generation.

Let's remember what the iconic and legendary life of Margaret Mead taught us, that it takes only a small group of committed and dedicated persons to change the world; in fact, "It's the only way."

Please give this request for donations your personal commitment, and join me in doing our generous bit.

Faithfully and sincerely yours,

Fred Yaichio Hoshiyama
Campaign Co-Chair



UPDATE ON THE TOPAZ MUSEUM

We need your help! A little over a year ago, the Topaz Museum Board received official confirmation from the National Park Service that we had received \$714,314 from the Japanese American Confinement Site grant program, kicking off our major effort to raise \$2.6 million for the construction of the Topaz Museum. We are approaching \$1.9 of our goal, and once more we are asking for your help in order to finish the Museum and the exhibits that will dynamically tell the history of those who were forced into camp. **We urgently need your help to finish the gallery exhibits and complete the Topaz Museum by 2014!**

While we are still talking with foundations and corporations who believe in this campaign, your help has always been the key to our success. When we needed funds to purchase the Topaz site, you made it possible to buy and preserve 634 acres of the 640 total. Please support us now that we are ready to complete the Topaz Museum. The exhibits will ensure this history will not be forgotten. In fact, you and your family may wish to honor a loved one by creating a permanent naming opportunity at the museum. Our website will have a list of specific levels.



Topaz Museum, designed by Sparano + Mooney Architects

Construction Begins this Month: The Museum will be built on Delta's Main Street, right next to the Delta Community Center, which will also start construction in June. In an effort to save money by not duplicating services, the City and the Topaz Museum Board both hired Westland Construction, a company with first-rate professionals and a solid reputation. We are confident in their expertise. Construction starts June 2013 and will be completed in December when we want to finish the museum and install the exhibits. With your contributions we can hold the grand opening for the Topaz Museum in the spring of 2014!

Museum Designers: Sparano + Mooney Architects and Darin Mano, from Salt Lake City, were chosen to be the architects of record. John Sparano and Anne Mooney's award-winning work has been widely recognized and featured in exhibitions and publications around the world.

Darin Mano visited Topaz when he was 15, and ever since then he has been deeply interested in its history. He recently graduated from Harvard with a degree in architecture and has opened his own firm RAW Design.

Alan Kawasaki of Shah Kawasaki Architects worked closely with the Topaz Museum Board, designing the original concept drawings that helped us acquire the National Park Service funding. We thank him for his devotion to the Topaz project. Without his help we would not have been as successful as we have been.



Darin Mano, John Sparano and Anne Mooney

West Office Exhibition Design, from Oakland, California, is designing the exhibits that will be the heart of the Museum, including a 20'x 20' barrack room. WOED has interviewed Dr. Frank Kami and his sister Yaeko in researching their family's barrack at Topaz. Dr. Kami made a set of chairs for his family when they first arrived at Topaz, and in the 1990s he donated the chairs to the Topaz Museum. He also made other pieces of furniture at camp that will be on display. Additional exhibits will focus on life prior to internment, Tanforan, and Constitutional issues violated by the executive orders. The exhibit hall will have an art gallery for the Museum's large collection of art. Artifacts and multi-media exhibits will show visitors the personal stories of Topaz. The recreation hall, once it is moved to the new Museum site, will be the setting for a display about the various uses of the recreation halls at Topaz. This building which has been restored to its 1943 historic state, demonstrates living conditions that the internees experienced as nothing else can.



We need your help to complete the Museum!

Be a part of this worthy project. Please follow Fred Hoshiyama's lead and give a generous contribution to the Topaz Museum to complete the project. The Topaz Museum Board has been successful because of your support in the past. Every gift is appreciated. A reply form and envelope is enclosed for your convenience. We thank you for contributing to the ongoing and necessary education about Japanese American internment.